



GOOD MORNING  
Have Good Trading Day

MONDAY



Price is what you pay.  
Value is what you get.

- Warren Buffet



## MARKET PLUSE

### INDIAN INDICES

NAME	CMP	NET CH.	%
SENSEX	25201	-562	-2.18
NIFTY	7655	-167	-2.15

### INDIAN ADR'S

SYMBOL	CLOSE	GAIN/ LOSS %
DRREDDY	61.35	-3.49
HDFCBANK	56.28	-1.87
ICICIBK	8.25	-2.94
INFY	16.92	-3.59
TATAMOTOR	24.15	-3.63
WIPRO	11.53	-3.92

### FII AND MF ACTIVITY

SYMBOL	In Crs.
FII's Eq (Provisional)	-1287.12
FII's Index Future	-356.38
FII's Index Options	635.62
FII's Stock Future	489.61
FII's Stock Options	-44.36
DII's Eq (Provisional)	1128.7

### CURRENCY

RBI RATE	04-SEP-2015
RUPEE - \$	66.4003
EURO	73.8903
YEN 100	55.5700
GBP	101.1941

## MARKET PLUSE

### GLOBAL INDICES

NAME	CMP	NET CH.	%
DOW	16102	-272	-1.66
NASDAQ	4683	-49	-1.05
NIKKEI	17727	-64	-0.36
HANG SENG	20767	-73	-0.35
SGX NIFTY	7632	-26	-0.34

### WORLD COMMODITIES

FUTURE	U\$\$	CHANGES
CRUDE	45.71	-0.34
NATURAL GAS	2.666	+0.011
GOLD	1122.8	+1.4
SILVER	14.585	+0.036
COPPER	2.3240	+0.0140

### WORLD EVENTS

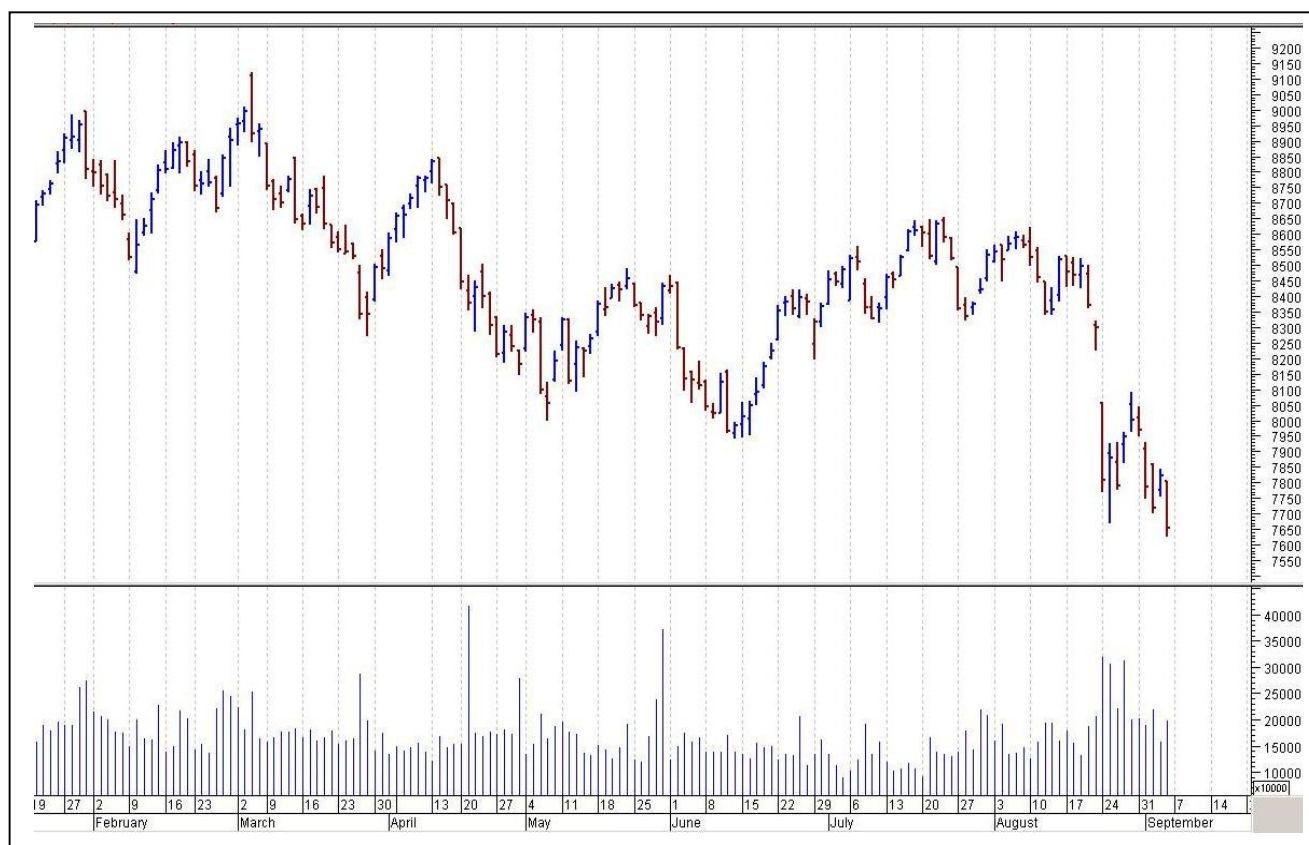
- US: NIL
- UK: Halifax HPI m/m

## TOP STORY

- Idea Cellular: Seeks Shareholders' Nod To Issue NCDs Up To `10,000 Cr
- SREI Group likely to exit Viom Networks, give up mgmt control (ET)
- ITC plans to share its dealer networks for a fee with startups (ET)
- Maruti may advance production from Gujarat unit by 3-6 months (ET)
- ONGC Videsh gains `700 cr from euro bond issue
- Dr Reddy's Launches MINTOP PRO- Procapil Hair Therapy
- RBI Approves Increase In FII Investment Limit In Natco Pharma Up To 31.5%
- NHAI says hike in toll on Delhi-Jaipur National Highway stretch withdrawn
- Snapdeal to invest \$100 m in Shopo: PTI
- RBI removes restrictions placed on purchase of shares in IndusInd Bank by FIIs as shareholdings in IndusInd Bank by NRIs, PIOs, FIIs & via GDR, ADR now below threshold limit



## NIFTY CHART



## MARKET COMMENTARY

Just after a day of relief, nervousness once again gripped the Dalal Street on Friday, with markets crashing in very early deals on across the board selling, tailing the overnight weakness in the US markets that was followed by the Asian indices. Traders were concerned about the August US nonfarm-payrolls report due Friday that may add fuel to the debate over whether the US economy is strong enough for the Federal Reserve's first interest-rate increase since 2006. A strong jobs number could rekindle speculation of an early rate hike, which could hurt risk assets, particularly in emerging economies. Domestic markets fell more than 2 per cent to the lowest in nearly 14 months and posted their worst week since November 2011. For today's trade Nifty likely to trade in the range between 7670 – 7690 in the upper side and 7630 – 7610 in the lower side.

### MARKET LEVELS

	CMP	SUPPORT LEVELS				RESISTANCE LEVELS			
NIFTY	7655	7630	7610	7570	7550	7670	7690	7730	7750
USDINR	66.76	66.58	66.5	66.4	66.3	66.85	66.9	67.05	67.2





### FUTURES CORNER

SCRIPS	CLOSE	SUPPORT	TARGET		REMARKS
		STOP LOSS	T1	T2	
BHARTIAIRTEL	350.45	347	354	358	TRADING CALL
COALINDIA	348	344	354	358	TRADING CALL
IOC	408.6	404	414	418	TRADING CALL

### EQUITY CORNER

SCRIPS	CLOSE	SUPPORT	TARGET		REMARKS
		STOP LOSS	T1	T2	
NO CALLS					

### DELIVERY BASED CALL / INVESTMENT CALL

SCRIPS	CMP	SUPPORT	TARGET		REMARK
		STOP LOSS	T1	T2	

### BULK DEALS (BSE)

SCRIP	CLIENT NAME	BUY/SELL	QUANTITY	PRICE
NIL				

### BULK DEALS (NSE)

SCRIP	CLIENT NAME	BUY/SELL	QUANTITY	PRICE
AMTEKAUTO	GOLDMAN SACHS INVESTMENTS MAURITIUS I LTD	SELL	1646420	27.64

### SCRIP'S IN F&O BAN

(To resume for normal trading below 80% of market wide limit required)

NIL



NIFTY 50 STOCKS: SUPPORT & RESISTANCE						
Symbol	Close	Support 1	Support 2	Pivot Point	Resistance1	Resistance2
ACC	1345.40	1319.45	1293.50	1359.15	1385.10	1424.80
AMBUJACEM	211.50	208.03	204.57	213.07	216.53	221.57
ASIANPAINT	812.85	795.23	777.62	809.62	827.23	841.62
AXISBANK	468.00	459.20	450.40	471.30	480.10	492.20
BAJAJ-AUTO	2211.00	2184.57	2158.13	2209.83	2236.27	2261.53
BANKBARODA	174.25	167.58	160.92	171.52	178.18	182.12
BHARTIARTL	350.00	343.95	337.90	348.30	354.35	358.70
BHEL	206.20	203.50	200.80	206.70	209.40	212.60
BOSCHLTD	21819.70	21547.23	21274.77	21852.52	22124.98	22430.27
BPCL	850.60	828.80	807.00	841.80	863.60	876.60
CAIRN	146.80	143.93	141.07	145.97	148.83	150.87
CIPLA	649.55	637.43	625.32	658.62	670.73	691.92
COALINDIA	347.50	340.57	333.63	344.93	351.87	356.23
DRREDDY	4052.85	3985.23	3917.62	4092.62	4160.23	4267.62
GAIL	280.85	272.65	264.45	284.25	292.45	304.05
GRASIM	3374.70	3324.27	3273.83	3373.63	3424.07	3473.43
HCLTECH	940.30	929.42	918.53	946.88	957.77	975.23
HDFC	1141.60	1127.45	1113.30	1145.70	1159.85	1178.10
HDFCBANK	996.05	982.03	968.02	994.02	1008.03	1020.02
HEROMOTOCO	2290.85	2260.95	2231.05	2295.45	2325.35	2359.85
HINDALCO	73.90	72.60	71.30	74.80	76.10	78.30
HINDUNILVR	830.00	821.88	813.77	831.32	839.43	848.87
ICICIBANK	257.75	253.23	248.72	259.17	263.68	269.62
IDEA	149.10	146.70	144.30	148.70	151.10	153.10
INDUSINDBK	840.80	824.18	807.57	833.62	850.23	859.67
INFY	1073.95	1056.97	1039.98	1083.98	1100.97	1127.98
ITC	317.10	314.07	311.03	317.78	320.82	324.53
KOTAKBANK	606.30	592.60	578.90	608.20	621.90	637.50
LT	1533.85	1514.33	1494.82	1539.52	1559.03	1584.22
LUPIN	1859.60	1835.12	1810.63	1864.78	1889.27	1918.93
M&M	1110.60	1093.90	1077.20	1117.70	1134.40	1158.20
MARUTI	4063.30	4029.77	3996.23	4084.73	4118.27	4173.23
NMDC	98.25	95.63	93.02	99.17	101.78	105.32
NTPC	114.50	112.57	110.63	115.08	117.02	119.53
ONGC	225.55	220.32	215.08	226.48	231.72	237.88
PNB	130.75	125.50	120.25	128.85	134.10	137.45
POWERGRID	123.60	121.73	119.87	124.32	126.18	128.77
RELIANCE	835.90	824.10	812.30	836.90	848.70	861.50
SBIN	225.15	222.13	219.12	227.02	230.03	234.92
SUNPHARMA	857.70	843.57	829.43	866.78	880.92	904.13
TATAMOTORS	322.90	315.67	308.43	323.23	330.47	338.03
TATAPOWER	56.55	55.15	53.75	57.45	58.85	61.15
TATASTEEL	218.90	214.30	209.70	221.60	226.20	233.50
TCS	2547.45	2519.43	2491.42	2567.17	2595.18	2642.92
TECHM	529.30	521.08	512.87	534.32	542.53	555.77
ULTRACEMCO	2915.10	2872.47	2829.83	2933.73	2976.37	3037.63
VEDL	93.25	91.28	89.32	94.27	96.23	99.22
WIPRO	554.00	543.60	533.20	557.60	568.00	582.00
YESBANK	647.20	632.13	617.07	650.07	665.13	683.07
ZEEL	360.40	355.37	350.33	364.68	369.72	379.03



## CORPORATE ACTION / BOARD MEETINGS

NSE Download Ref.No.:NSE/CML/30515:- Face Value Split - Aegis Logistics Limited from Rs. 10 to Rs.1 wef September 16, 2015

NSE Download Ref No :NSE/FAOP/3065:- Adjustment of Futures and Options contracts in the security DHFL . The adjusted strike price shall be arrived at by dividing the old strike price by the adjustment factor i.e. 2. The new market lot will be 1000. Wef September 09,2015

NSE Download Ref.No.: NSE/CML/30681:- Face Value Split - Alankit Limited (ALANKIT) from Rs.10 to Rs.2 wef September 23, 2015

### BOARD MEETINGS

COMPANY NAME	DATE	PURPOSE	RS. PER SH.
TINPLATE	7-Sep-15	Annual General Meeting/ Dividend	1.6
ONGC	7-Sep-15	Annual General Meeting/ Dividend	0.5
HINDALCO	7-Sep-15	Dividend	1
JKIL	7-Sep-15	Annual General Meeting/ Dividend	4
POWERGRID	7-Sep-15	Annual General Meeting/ Dividend	1.31
IITL	7-Sep-15	Annual General Meeting/ Dividend	1
RUPA	7-Sep-15	Annual General Meeting/ Dividend	2.75
BEML	7-Sep-15	Dividend	1
PATINTLOG	7-Sep-15	Annual General Meeting/ Dividend	0.5
SANGHVIMOV	7-Sep-15	Annual General Meeting/ Dividend	0.5
PANAMAPET	8-Sep-15	Annual General Meeting/ Dividend	2
SUPREMEIND	8-Sep-15	Annual General Meeting/ Dividend	7
KOLTEPATIL	8-Sep-15	Annual General Meeting/ Dividend	2
NEYVELILIG	8-Sep-15	Annual General Meeting/ Dividend	1
SUPERHOUSE	8-Sep-15	Annual General Meeting/ Dividend	1.5
PIIND	8-Sep-15	Annual General Meeting/ Dividend	1.3
RPPINFRA	8-Sep-15	Annual General Meeting/ Dividend	0.5
BLISSGVS	8-Sep-15	Annual General Meeting/ Dividend	0.5
KEI	8-Sep-15	Annual General Meeting/ Dividend	0.4
IGL	9-Sep-15	Dividend	6
ORICONENT	9-Sep-15	Annual General Meeting/ Dividend	0.44
INGERRAND	9-Sep-15	Annual General Meeting/ Dividend	3

## NEWS & RUMOURS:

- Gold (Spot Dollar) major support = \$1092/\$1069 & Resistance = \$1152/\$1182.
- Crude oil range->\$41 to \$51.
- U.S. Stocks Decline as Jobs Report Brings Little Clarity on Fed: - U.S. stocks declined as August payrolls data did little to bring clarity to the outlook for interest rates amid growing concern about the strength of the global economy.
- September is historically the worst month of the year for the S&P 500, with the equity gauge falling 1.1 percent on average based on data going back to 1927, according to data compiled by Bloomberg.
- Putin's China Energy Deals May Hide Paper Tigers as Growth Slows: - Vladimir Putin's long-heralded visit to Beijing this week yielded five framework energy deals that bolster Russian hopes of strengthening ties with China as relations sour with the U.S. and Europe. Yet if history is any guide, most of the accords won't bear fruit.
- Fed's Lacker says will go into September policy meeting 'with an open mind': - The head of the Richmond Federal Reserve said on Friday he would go into the Sept. 16-17 Fed policy meeting with an open mind over whether to raise interest rates this month.
- Brent crude oil slips towards \$50 on demand concerns: - Oil prices fell on Friday, pushing benchmark North Sea Brent crude down towards \$50 a barrel, after a cut in European growth forecasts heightened worries over the outlook for demand at a time of huge oversupply.
- U.S. labor market shows some muscle despite slower job growth: - U.S. job growth slowed in August, but the unemployment rate dropped to a near 7-1/2-year low and wages accelerated, keeping alive prospects of a Federal Reserve interest rate hike later this month.

## TRENDS & OUTLOOK – DATE: 07- Sep- 2015

### PRECIOUS METALS:

COMMDITY (MCX)	S2	S1	PIVOT POINT	R1	R2
GOLD (Oct)	26026	26274	26530	26778	27120
SILVER (Dec)	33100	34200	35500	36700	37920

### BASE METALS

COMMDITY (MCX)	S2	S1	PIVOT POINT	R1	R2
COPPER (Nov)	340	345	349	355	360
ZINC (Sep)	114.75	117.30	119.70	122.20	124.70
LEAD (Sep)	108.30	110.55	112.95	115.45	118.20
NICKEL (Sep)	624	640	659	675	693

### ENERGY

COMMDITY (MCX)	S2	S1	PIVOT POINT	R1	R2
CRUDE OIL (Sep)	2850	2970	3090	3225	3333
NATURAL GAS (Sep)	169	174	180	185	192

### DATE TALKS : TODAY'S ECONOMIC DATA :

U.S. Bank holiday: - Monday, "U.S. Bank holiday", US banks will be closed (on 07-Sep, 2015) in observance of Labor Day;

Usual Effect: Low liquidity and irregular volatility.





**Registered Office**

Indira House, 3rd Floor, 5 Topiwala Lane,  
Opp. Lemington Road Police Station, Grant Road (East), Mumbai - 400007.

**Corporate Office**

'Ramavat House' E-15, Saket Nagar, Indore - 452018 (M.P.)

**Customer Care**

Tel: +91-731-4097170/ 71/ 72/ 73/ 74 M. +91 93031 72345

Email: [customercare@indiratrade.com](mailto:customercare@indiratrade.com) [www.indiratrade.com](http://www.indiratrade.com)



**INSTITUTIONAL DEALING UNIT**

Africa House, 5, Topiwalla Lane, Lamington Road, Mumbai, 400007

Tel: +91 22 30080678 Fax : +91 22 23870767 Email : [ie@indiratrade.com](mailto:ie@indiratrade.com)

**Disclaimer**

This report is for private circulation within the Indira Group. This report is strictly confidential and for information of the selected recipient only and may not be altered in any way, transmitted to, copied or distributed, in part or in whole, to any other person or to the media or reproduced in any form. This report should not be construed as an offer or solicitation to buy or sell any securities or any interest in securities. It does not constitute a personal recommendation or take into account the particular investment objectives, financial situations, or any such factor. The information, opinions estimates and forecasts contained here have been obtained from, or are based upon, sources we believe to be reliable, but no representation of warranty, express or implied, is made by us to their accuracy or completeness. Opinions expressed are our current opinions as of the date appearing on this material only and are subject to change without notice.